



Government of Western Australia
Department of Water and Environmental Regulation

Overview of Climate Adaptation Strategy

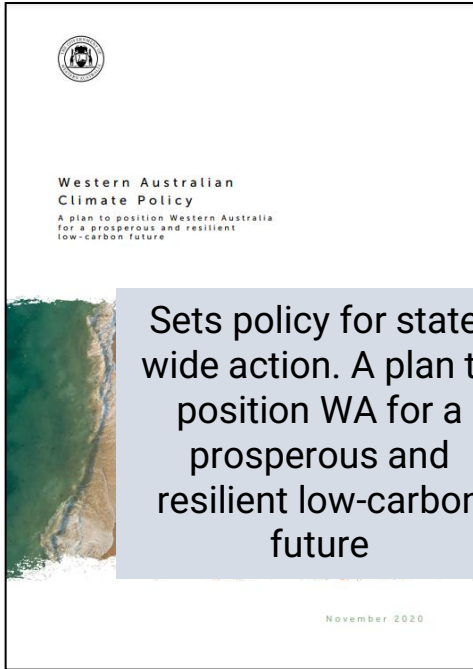
Presentation to the
Climate and Health Community of Practice



James Duggie
Climate Risk and Resilience
12 December 2023

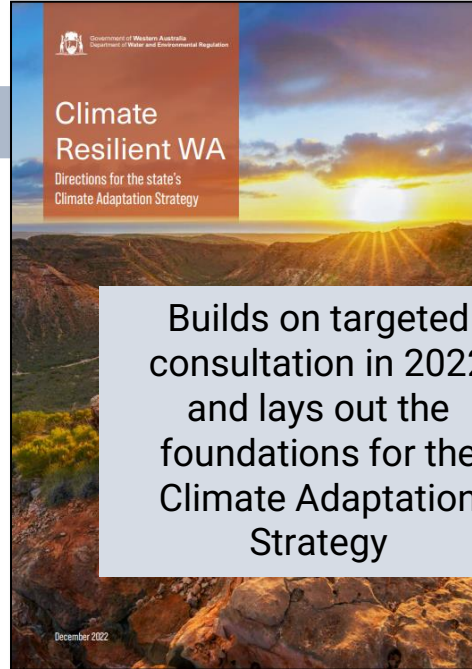


WA Climate Policy (2020)



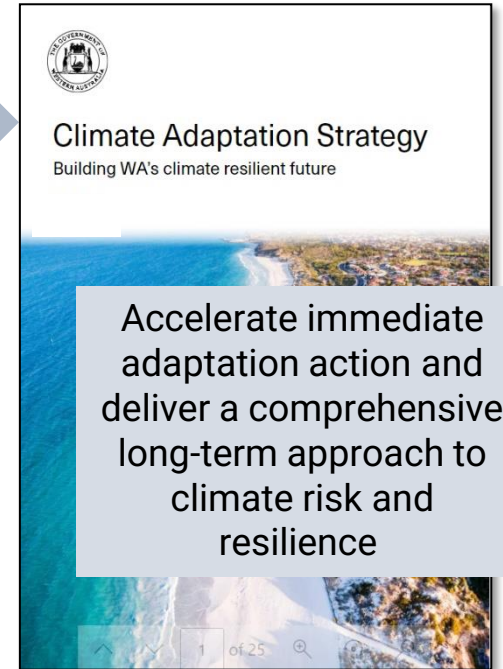
Sets policy for state-wide action. A plan to position WA for a prosperous and resilient low-carbon future

Directions paper (2022)



Builds on targeted consultation in 2022 and lays out the foundations for the Climate Adaptation Strategy

Climate Adaptation Strategy (2023)



Accelerate immediate adaptation action and deliver a comprehensive long-term approach to climate risk and resilience

Climate Action in Western Australia

Net Zero by 2050 target – legislation this year

Action includes:

Sectoral Emissions Reduction Strategies

Energy Transformation Strategy

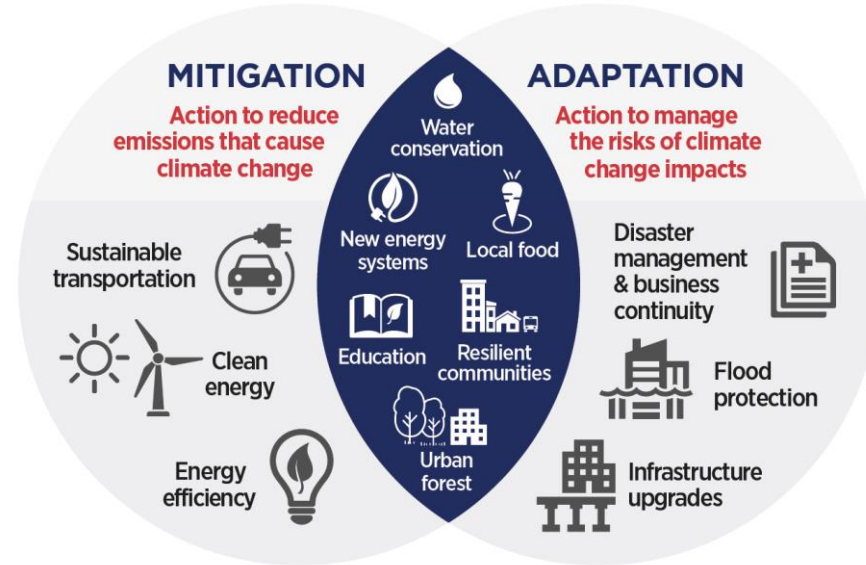
Clean Energy Future Fund

Carbon Innovation Grants Program

Government Net Zero Transition Plan – Whole-of-Gov't 80% target by FY 2030
(Emissions Reduction Framework)

Electric Vehicle Strategy

Climate change legislation



Climate Resilient WA

Action includes:

Climate Adaptation Strategy

Climate Science Initiative

Climate Risk Framework

Sector Adaptation Plan program

Regional Climate Alliance

Water infrastructure investment

Agriculture Climate Resilience Fund

Climate Adaptation Strategy

Vision

Western Australia's communities, environment and economy are resilient and continuously adapting to climate change in a forward-looking, fair and collaborative manner.



Direction

1. Produce and communicate credible climate information



Direction

2. Build public sector climate capability and strengthen accountability



Direction

3. Enhance sector-wide and community partnerships to unite and coordinate action



Direction

4. Empower and support the climate resilience of Aboriginal people

Adaptation principles



Collaborate

Work together across all levels of government, business, academia and the community to prepare for, and adapt to, a changing climate.



Adjust as we go

Design actions and make decisions in a flexible and iterative way, to adjust as circumstances change and new information emerges.



Make well-informed decisions

Use the best available evidence, including Aboriginal and local knowledge, to anticipate change and develop effective adaptation responses.



Mainstream adaptation

Develop policy, systems and processes that make climate change adaptation part of everyday decision-making and planning.



Think long-term

Take an intergenerational perspective that extends beyond political, planning and financial cycles.



Adapt locally

Enable communities to prepare for the risks and opportunities they face, and tailor adaptation actions to the local situation.



Promote equity

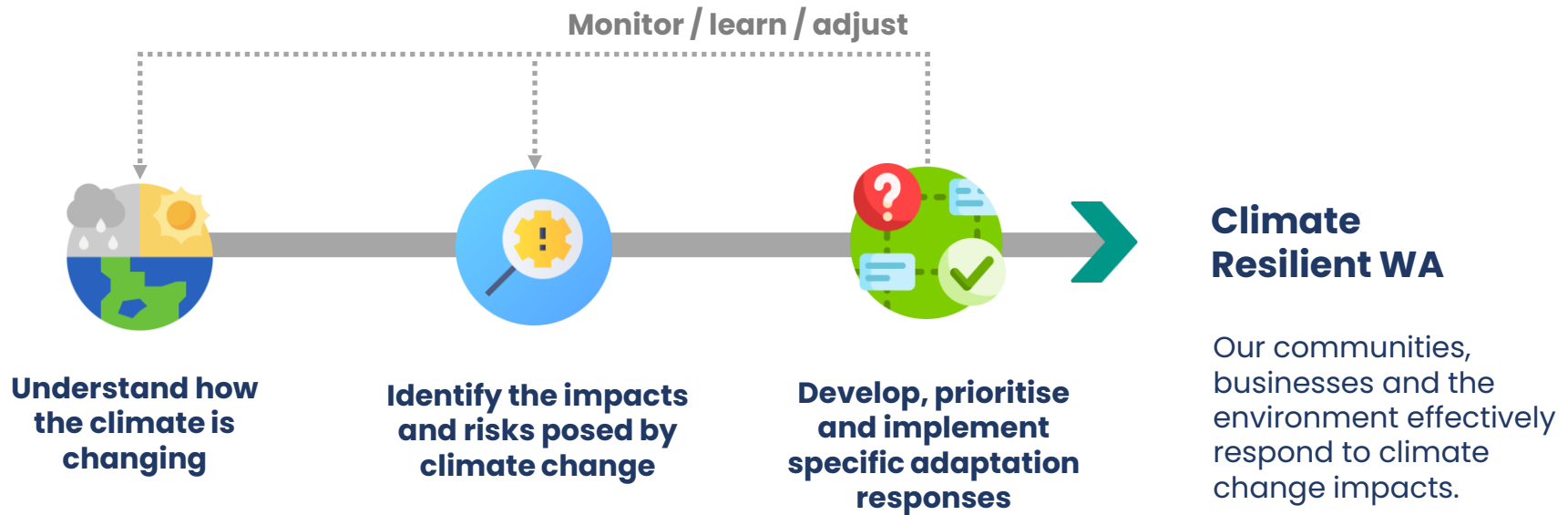
Help the people, places and infrastructure most vulnerable to climate impacts, while building adaptive capacity for all. Address equity implications for affected stakeholders.



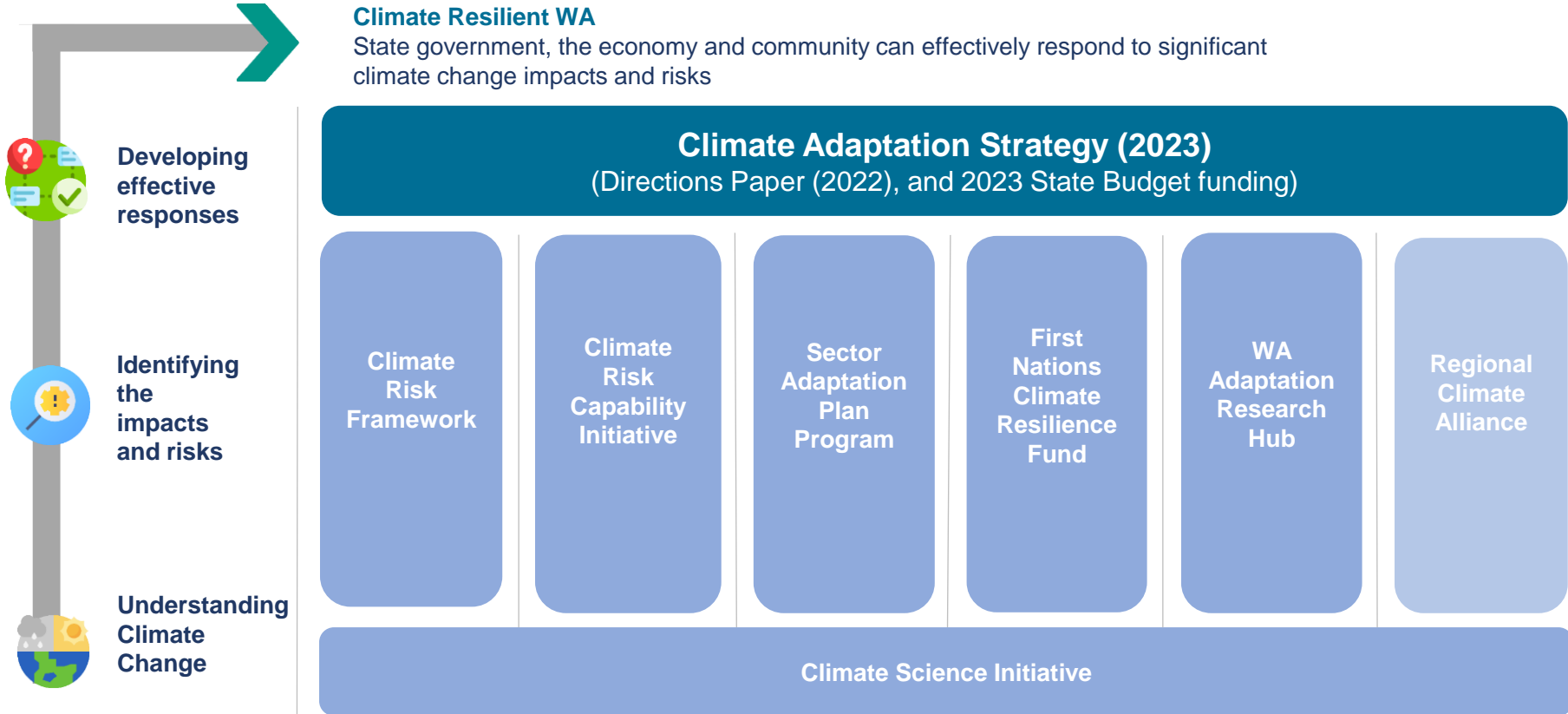
Maximise co-benefits

Take action that achieves complementary outcomes including reducing greenhouse gases while avoiding adaptive responses that reduce resilience.

What are the essential steps for adapting effectively?



Responding to climate risk and increasing resilience in WA



Select funded initiatives



Direction 1:
Produce and communicate credible
climate information

13
Actions

- **\$3.4m** Climate Science Initiative Stage 2 and communications package
- **\$0.25** Adaptation Research Hub



Direction 2:
Build public sector climate capability
and strengthen accountability

10
Actions

- Climate Risk Framework (existing funding)
- Climate Risk Capability Initiative (existing funding)



Direction 3:
Enhance sector-wide and community
partnerships to unite and coordinate action

7
Actions

- **\$5.5m** Sector Adaptation Plan Program
Primary Industries (Dept Primary Industries and Regional Development), Small to Medium Enterprises (Dept Jobs, Tourism, Science and Industry JTSI), Natural Environment (Dept Biodiversity, Conservation and Attractions)



Direction 4:
Empower and support the climate
resilience of Aboriginal people

6
Actions

- **\$1.9m** First Nations Climate Resilience Fund
- **\$1.9m** Building Climate Resilience of West Kimberley Traditional Owners

Climate Risk Management in WA

Climate Risk Framework (CRF) – 2026

Department of Water and Environmental Regulation (DWER) collaboration with WA Treasury to develop Framework to monitor, assess and report on implications of climate change on the State's finances, infrastructure, physical assets and service delivery

Climate change risk management guide (interim) (2022)

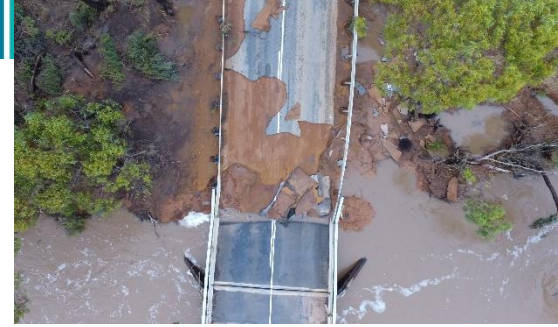
Provides guidance on how to conduct a first pass physical climate risk assessment

CRF Pilot – 2023-2025

Eight select State agencies and Government Trading Enterprises have agreed to be part of two-year pilot phase and commence climate risk disclosures (to Treasury only). Supported by a Climate Risk Working Group chaired by WA Treasury.

Climate Risk Capability Initiative (DWER)

Program to support public sector agencies to build capability to assess and embed climate risk management within their organisations





Sector Adaptation Plan Program

- \$5.5m

Sectoral adaptation plans will be a valuable tool for government, industry and the community to develop a common understanding of future impacts and opportunities to manage or reduce climate impact risks on infrastructure.

– State Infrastructure Strategy (Infrastructure WA)

Sector	Lead	22/23	23/24	24/25	25/26
Health and Human Services	Department of Health				
Emergency Management	State Emergency Management Committee				
Small and Medium Enterprise	Department of Jobs, Tourism, Science and Innovation				
Primary Industries	Department of Primary Industries and Regional Development				
Natural Environment	Department of Biodiversity, Conservation and Attractions				
Water	TBD				→
Infrastructure and Built Environment	TBD				→

Thank you



Overview of Climate Adaptation Strategy

James Duggie

james.duggie@dwer.wa.gov.au



www.wa.gov.au/service/environment/environment-information-services/climate-adaptation-strategy